

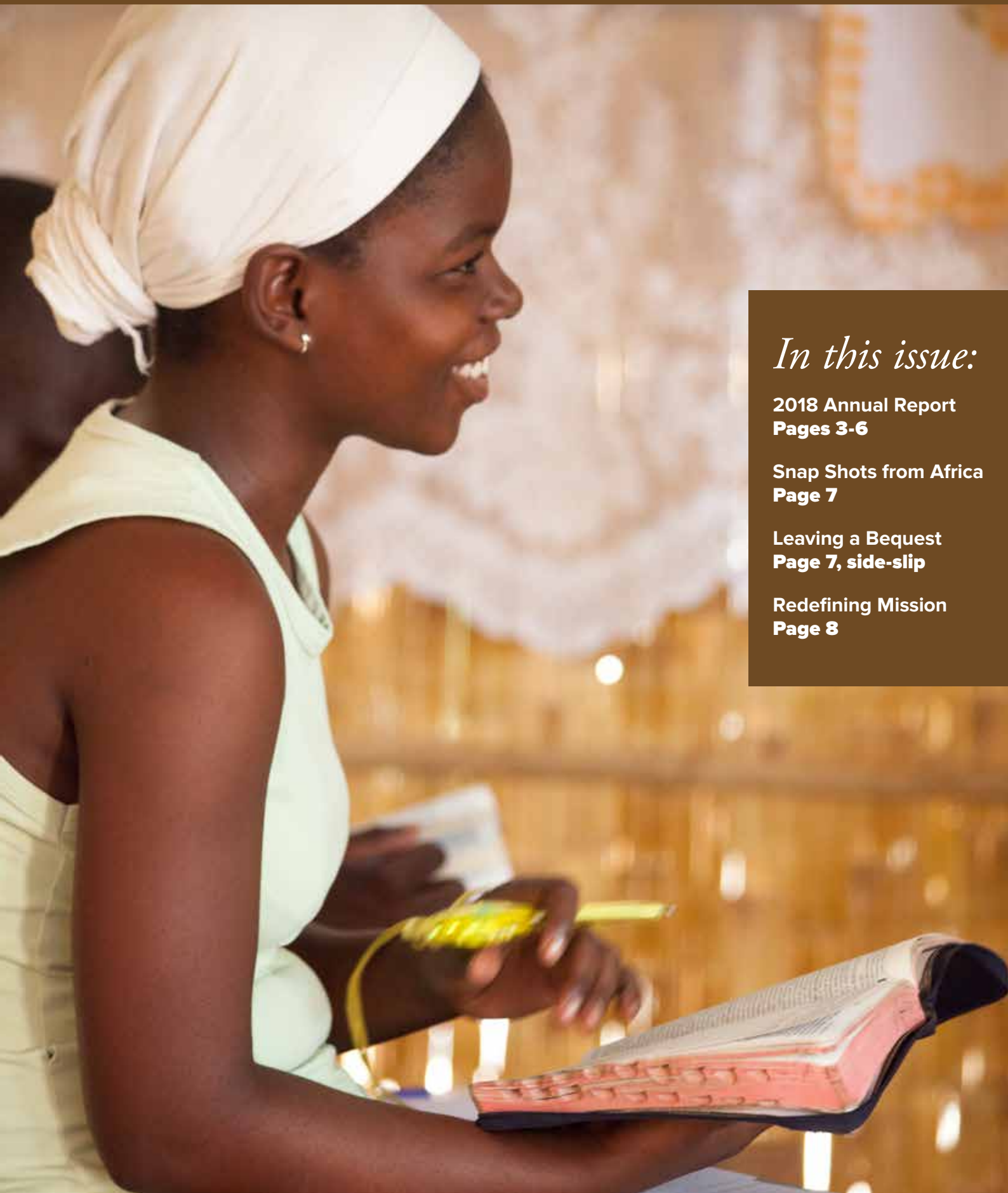


AFRICA INLAND MISSION

Christ-Centred Churches
Among all African Peoples

AFRICA news

Feb-May 19
www.aimint.org/ap



In this issue:

2018 Annual Report
Pages 3-6

Snap Shots from Africa
Page 7

Leaving a Bequest
Page 7, side-slip

Redefining Mission
Page 8

Just Briefly news from Africa and the Asia-Pacific



Anna Jarmy, is in Australia after 25 years' service in Madagascar and will retire after a home assignment. Anna's recent ministry included writing English Bible commentaries on Acts and Luke, and helping train Malagasy missionaries.

AIM's Prayer Week, 25-31 March 2019. Venues include Sydney, Gosford, Wyee, Brisbane, Auckland and Hong Kong. Please contact your local office for details.

Workers on home assignment, early 2019. In New Zealand: Bruce and Christine Turner, Uganda; Marlene Van Tonder, South Sudan.

In Australia: T&L, north Africa; Pete and Cath Gitau, Rwanda; Anna Jarmy, Madagascar and Kath, Chad; Margaret Papov; and Jeremy and Felicity Aitken. Invite a guest to your church:
E director.au@aimint.org

Anne Gallard was honoured by family and friends at a service in December. Anne died on 30 Nov. Anne and husband Neville served with AIM in Kenya from 1987 to 1998, first at Meru in youth and church ministry and at

Masinga Bible school. Neville served on the Australia council for 11 years.

Nandi Bible Celebrations. July 2019 marks 100 years since AIM Australian missionaries Stuart and Elise Bryson arrived in Kenya and 80 years since they helped publish the first Nandi Bible.

Enjoy Afternoon Tea on Saturday 30 March, 2-4pm in Gosford. Farewell Anna Jarmy. Hear about north Africa. RSVP: 02 4322 4777.

Tribute to Merve and Rosa

Badrick AIM was blessed by a bequest from Queenslander Merve Badrick who died in 2018. He was pre-deceased by his wife Rosa in 2013.

Retired AIM missionary Helen Brown fondly recalls decades of support from Merve and Rosa.

"Rosa (nee Shaw) was on the AIM Queensland committee for many years. Rosa was unbelievably helpful." Helen said Rosa kept up regular

correspondence to her and other missionaries in Africa via post; and arranged deputation for missionaries. Merve and Rosa were keen members of AIM's Brisbane prayer group. Rosa was one in a million. When she married Merve, the output doubled, Helen said. AIM gives thanks for the Badrick's and all our home-based volunteers and supporters.

The Unfinished Story

A New Resource for Home Groups

A short video-based course helps small home-groups gain a life-changing insight into people not yet touched by the gospel.

The *Unfinished Story* is an overview of the mission of God, from Genesis to the Gospels, with lessons from 2,000 years of Christian history.

This course helps inspire and challenge God's people today. It helps you engage with God.

The *Unfinished Story* helps form a Biblical worldview. It shows how participation with God in mission can be an exciting adventure and an essential part of being a true follower of Jesus!

This will help small groups in a local church. The normal format is one night a week, for four weeks. Each session is for about 105 minutes.

The *Unfinished Story* features:

- Inspirational teaching videos on the Biblical, historical, strategic and cultural aspects of mission. This helps people easily understand mission.
- Supplementary videos complement the teaching and activities in each session.
- Praying for the least-reached peoples,

around the world and living in our own cities and communities.

- Stimulating and interactive group-discussions help participants share what the Lord is saying to them personally. According to course creators, "We are living in the most exciting time in mission history, ever. This just might be the generation in which the final chapter of mission history is written."

The course is produced by Simply Mobilising, creators of the Kairos course. See: simplymobilizing.com/courses/the-unfinished-story

Contact AIM if you would like assistance in running this or other courses in your church on **E** director.au@aimint.org

AFRICA
news
Feb-May 19
www.aimint.org

English-language magazine of
Africa Inland Mission Asia-Pacific
Mobilising Region.

Editor Len Leslighter
E director.au@aimint.org

Africa Inland Mission Ltd.

PO Box 328
Gosford NSW 2250 Australia
T 02 4322 4777

Africa Inland Mission International, New Zealand

PO Box 13457 Onehunga
Auckland 1643 New Zealand
T 09 281 4595 **E** admin.nz@aimint.org



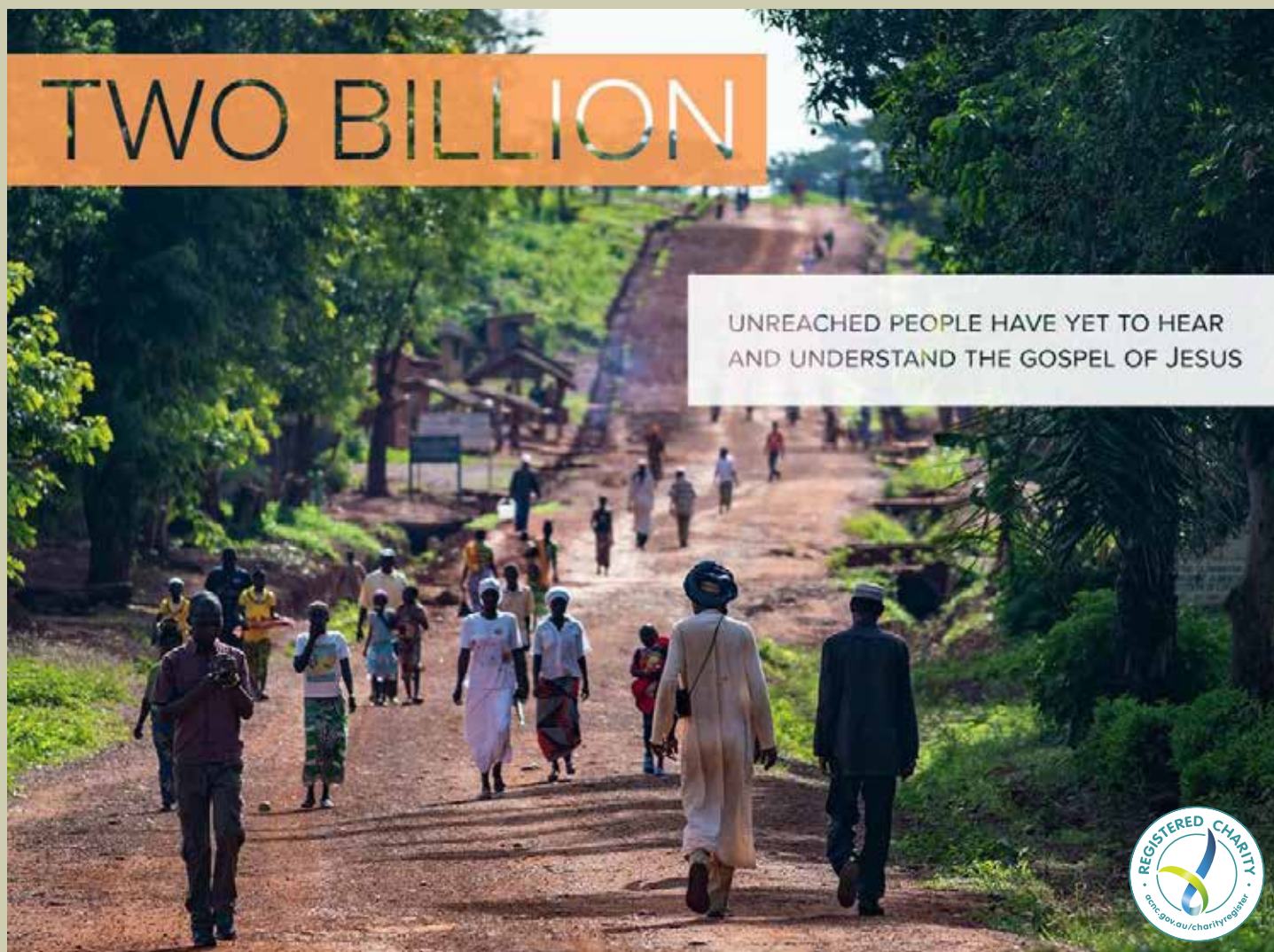
Africa Inland Mission International, Hong Kong

PO Box 70238
Kowloon Central Hong Kong
T (852) 2770 5380
E director.hk@aimint.org



**AFRICA
INLAND MISSION**
Christ-Centred Churches
Among all African Peoples

Cover Africa Inland Mission partners with churches and people to make Jesus known. Our priority is those that may otherwise never hear.



Introducing Africa Inland Mission Ltd.

Africa Inland Mission (AIM) in Australia partners in the role of empowering the world-wide Christian church in its responsibility to teach and make disciples of Christ according to the Great Commission of Jesus Christ in Matthew 28:19-20. It is a separate legal entity but cooperates with other similar entities around the world in an alliance called Africa Inland Mission International.

AIM commenced in Australia in 1916, following its commencement in East Africa in 1895. AIM was registered in Australia as an incorporated association Africa Inland

Mission International (Australia) Inc. in 1993. In 2018 the entity transitioned to Africa Inland Mission Ltd., a Company limited by guarantee. It is a charity registered with the Australian Charities and Not-for-profits Commission (www.acnc.gov.au) and Missions Interlink in Australia.

The Council through the Executive Director (CEO) of Africa Inland Mission Ltd. oversee and coordinate with other AIM entities in the Asia-Pacific Mobilising region. These currently comprise Africa Inland Mission International New Zealand, a charitable trust registered in

New Zealand; and Africa Inland Mission International Hong Kong a registered entity moving to be a company limited by guarantee in Hong Kong.

The focus of the Asia-Pacific mobilising region is to mobilise workers, prayer partners and finances to help achieve Christ-centred churches among all African people groups.

For more information about the company and our ministry see: www.aimint.org/ap

From the Chief Executive Officer

by Len Lesleighter

AIM in Australia and the Asia-Pacific aligns with the AIM International Council focus: *depending on the grace and power of the Lord, having priority on unreached people groups, proclaiming the gospel, and making disciples with the aim of seeing Christ-centred churches formed among the people groups of Africa.*

A primary aim is to see the Asia-Pacific Christian community increasingly engaged in God's mission to African peoples with particular focus on unreached people groups.

1. Church involvement

This includes increasing the number of Asia-Pacific churches engaged in mission, particularly among Africa's unreached people groups. Table 1 shows the change in churches supporting AIM workers from 2017 to 2018. There was an overall increase of 26 churches in 2018.

Table 1. Asia-Pacific Churches financially supporting AIM workers in 2017 and 2018.

Country	2016-17	2017-18	Change
Australia	68	61	-7
Hong Kong	30	61	+31
New Zealand	3	5	+2
Asia-Pacific Total	96	118	+26

There was also an increase of 22 churches supporting AIM projects or the AIM general operations.

2. Asia-Pacific Workers

One goal is to increase the number of Asia-Pacific Christians working cross-culturally among Africa's unreached people groups. The number of short-term and full-term workers from 2016-17 to 2017-18 is given in Table 2 and 3 below. Short-term workers generally serve three to 12 months on individual assignments or one to two months on teams. Full-term workers serve for more than 12 months.

Table 2. Short-termers by Asia-Pacific sending office in 2016-17 and 2017-18.

Short-termers	2016/2017	2017/2018	Change
Australia	4	3	-1
Hong Kong	9	12	+3
New Zealand	0	1	+1
TOTAL Asia-Pacific	13	16	+3

Table 3. Full-termers by Asia-Pacific sending offices in 2016-17 and 2017-18.

Full-termers	2016/17	2017/2018	Change
Australia	25	21 (incl. 6 on HA)	-4 (retired)
Hong Kong	7	9	+2
New Zealand	3	3	0
TOTAL Asia-Pacific	35	33	-2

The overall combined increase of short-term and full-term workers is 1.

There were 26 workers from the Asia-Pacific working among unreached African people groups (UPG's) showing an increase of one worker from 2016-17 to 2017-18. (Table 4).

Table 4. Full-termers serving among UPGs for some time during the year

Full-termers in UPGs	2016/17	2017/2018	Change
Australia	16	14	-2
Hong Kong	6	9	+3
New Zealand	3	3	0
TOTAL Asia-Pacific	25	26	+1

Workers in AIM generally work in one of four ministry areas: 1. Making disciples among African unreached peoples, 2. Mobilising Africans; 3. Training African church leaders; and 4. Supporting those doing 1-3. Most workers from the Asia-Pacific are engaged in making disciples among African unreached people groups. Some make valuable contributions in the other ministry areas. There is a support team of about nine full-time, part-time and volunteer workers in our offices in Australia, Hong Kong and New Zealand.

3. Asia-Pacific Christians Praying

Encouraging more Christians and churches in the Asia-Pacific to pray for AIM's ministry among Africa's unreached people groups is a third goal.

There was an increase in Australia and New Zealand of 524 people receiving prayer information by electronic means including email and social media. The increase in Australia alone was about 130. About 346 less people received this by paper copies.

About 5,549 people or churches in Australia (3925) and New Zealand received AIM prayer and promotional material through post and electronic media in 2017-18.

4. Financial Supporters

AIM seeks an increasing number of Asia-Pacific Christians and churches committing to regular financial support. Table 6 shows the change in those supporting individual workers.

Table 5. The number of individuals or other entities supporting workers

Country	2016/17	2017/2018	Change
Australia	608	481	-127
Hong Kong	173	160	-13
New Zealand	98	69	-29
			-169

There was a slight decrease in the number of people and churches supporting AIM in the Asia-Pacific (Table 7). This may reflect the change in the number of workers from the Asia-Pacific.

Table 6. The number of individuals or other entities supporting AIM (general donations / projects).

Country	2016/17	2017/2018	Change
Australia	144	123	-21
Hong Kong	55	36	-19
New Zealand	26	32	6
			-34

5. The Future

The overall increase in workers from the Asia-Pacific in 2016-17 is encouraging. We continue to pray for more supported workers coming through the Australia, New Zealand and Hong Kong offices to serve among Africa's unreached.

Thank you to all those who have financially and prayerfully supported the workers and general ministry of Africa Inland Mission. We invite more to join your ranks.

The restructure to a company now opens the door for more

churches and individuals to join Africa Inland Mission Ltd. in Australia as members. This will give many an opportunity to contribute in various ways.

From the Chairman

by Peter Aldridge

1 Cor 3 v 5

What then is Apollos?

What is Paul?

Servants through

whom you believed,

as the Lord assigned

to each. ⁶I planted,

Apollos watered,

but God gave the growth. ⁷So neither he who

plants nor he who waters is anything, but only

God who gives the growth. ⁸He who plants

and he who waters are one, and each will

receive his wages according to his labour. ⁹For

we are God's fellow workers. You are God's

field, God's building.

As I report to you about the year that has just passed, I believe it is important to keep the above passage from Paul in mind. Success in any Christian work may never be fully seen by any one participant and also perceived failure may turn out to be an unmitigated success. God is the growth-giver, what we are doing is participating in His work.

For your Council and staff, a lot of the planning for the future is coming to fruition right now.

The Company Limited by Guarantee (CLG) structure is in place. This gives us a number of benefits including increasing our operating flexibility. We are now legally compliant and able to operate in all Australian States. Also, as we have grown in a financial sense over the last few years, we have reached a size of operation that precludes us from



remaining as we were, an Association registered in NSW. As a CLG, we are able to expand our membership categories to include our workers, and other entities such as supportive churches and businesses.

We have tried to forge increased linkages with the other members of AIM Asia-Pacific (NZ and HK), and this is yielding fruit. Both Jack on our Council and Eva on staff in NZ have helped with this. We are still looking for a NZ based Council member, though.

The Policy Governance model of Board/Director roles and relationships with the high level of reporting against established policies has been beneficial to both parties. My relationship, both working and personal, with your Director, Len, is good.

I have to report, though, there are a couple of areas of concern to your Council. Our financial situation is tight, and we will be reporting a reduction in working capital and reserves from our operation last year.

It is not yet dire, and has been rectified for the next year by a generous bequest and reduction in the office staff. A reduction in supporting churches and individuals and the number of on-field personnel from Australia has accompanied this situation. The best way to solve this issue is of course finding people who will become workers in Africa for Christ, both long and short term.

Your Council and staff will be focussing on these issues. It must be noted that other regions in AIM are facing similar challenges. Please pray for us as we face these and other issues.

The number of members is also of concern, and focus must be given to the expansion of our membership base. As mentioned above, this will include utilising the available expansion of member categories, allowing our staff and workers to be members, and attracting other like-minded Christians to support Gods work that we undertake



Finances 2018

The total income for Africa Inland Mission Ltd. from July 2017 to June 2018 was \$1,070,605.

This is the first year designated donations for workers and projects are shown as restricted income. Previously these items were processed through the balance sheet only.

This year's total expenses were \$1,168,914 leaving a net income of

(\$98,309). This reflects an intentional decision to use reserves to employ staff aimed at promoting growth in the mission.

The sources of income and categories of expenses are shown in the graphs below.

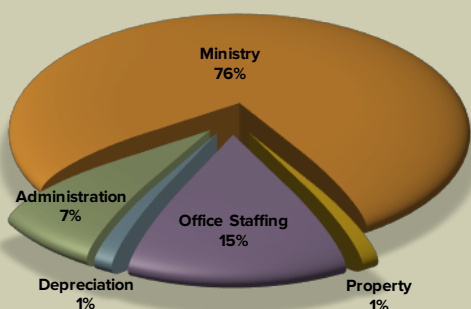
Total asset for the company were \$1,679,072 against total liabilities of \$777,712.

The challenge remains to increase regular income levels through increased

donations and missionary support.

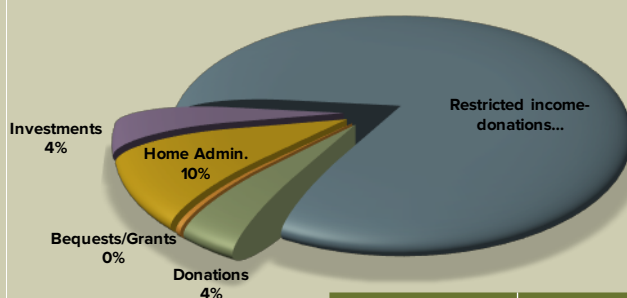
The full Annual Audited Accounts for 2017-2018 have been provided to company members and will be posted on the Australian Charities and Not-for-profits Commission website, www.acnc.gov.au They are also available on request to director.au@aimint.org.

Expenses 2018
\$1,168,914



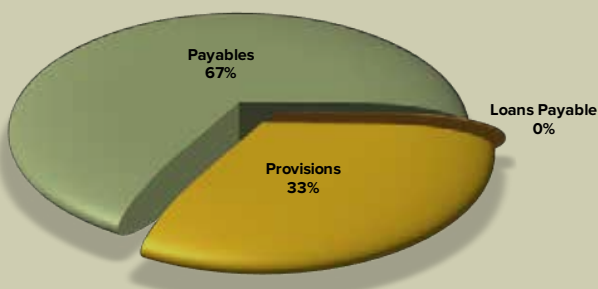
Expenses	Amount
Administration	\$86,738
Ministry	\$881,718
Property	\$13,972
Office Staffing	\$171,247
Depreciation	\$15,238

Income 2018
\$1,070,605



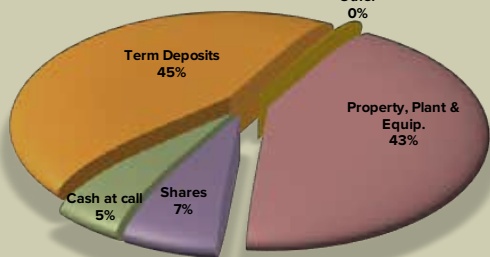
Income	Amount
Donations	\$44,575
Bequests/Grants	\$4,469
Home Admin.	\$100,992
Investments	\$45,151
Restricted Income Donations	\$872,367

Liabilities 2018
\$777,712



Liabilities	Amount
Payables	\$519,490
Loans Payable	\$1,500
Provisions	\$256,722

Total Assets 2018
\$1,679,072



Asset Type	Amount
Cash at call	\$87,181
Term Deposits	\$749,427
Other	\$2,774
Propert, Plant & Equip.	\$726,600
Shares	\$113,090



VISION2020 IN FAITH • IN HOPE • INLAND

Africa Inland Mission Ltd in Australia and other AIM entities in the Asia-Pacific are collaborating as part of AIM International and working towards Vision 2020.

This is a six-year vision from January 2015 to December 2020. It is something only God can achieve.

Progress toward Vision 2020

Vision 2020 Goals	Results as at 31 December 2017
Engage 20 African unreached people groups (UPGs)	16 new UPGs engaged 80 in total UPGs engaged
Reach 20 Africa unreached people groups	2 Reached Samburu and Dorobo of Kenya.
Build 40 Ministry teams in diaspora	9 Teams , and ministry locations in diaspora
Mobilise 400 African missionaries	194 Mobilised
Equip 4000 African church leaders	4388 Equipped Africa church leaders trained

Africa Inland Mission Ltd.

PO Box 328 Gosford NSW 2250

P 02 4322 4777 E director.au@aimint.org

www.aimint.org/ap

Snap Shots from Africa 2018

Kath, in Chad

One-on-one Bible studies with local women continue.

“We worshipped and fellowshiped in His word and in prayer and also sang songs my friend had written.”

“As we were talking, she expressed that she is finding it easier to read the word and to understand the meaning because she has the Holy Spirit to help her.”

Pray also for believers as they request to be baptised.

Bruce and Christine Turner, among the Karamojong in Uganda

Cannon John and Bruce have visited churches who were trained in Bible storying last year. The largest church has been reaching out to other villages with the gospel.

“You’ll be thrilled to know several men chose to follow Christ this week. This is crucial in a region where the majority of believers are older women.”

“Yesterday Bruce also heard of some turning to Christ through listening to the Treasures (audio Bibles). This is most encouraging!”

Marlene Van Tonder, South Sudan

“The church continues to struggle with infighting between members and the struggles of daily life.”

“I have been pleased to see them beginning to work out these issues, without relying solely on us as outsiders to mediate.”

Salty from Hong Kong

Training and mobilising Africans is an important task in reaching Africa’s unreached.

“Many of these local believers need our help to find a way to move into these Islamic locations. Our local brothers and sisters also need knowledge of what Islam is. They also need to know how to identify and start small businesses that can be sustainable.”

“Small businesses give both a source of income and a reason for being in local Muslim community.”

Jeremy and Felicity Aitken, among the Laarim, South Sudan

“Last Monday morning I shared the story of the 12 spies with the women and children of the chief’s compound.”

“Kye, has been particularly attentive and leading the group in her desire to pray, learn Bible stories and participate.”

Rob and Tianne Varicak, among the Didinga, South Sudan

“In January we were greatly encouraged when 17 seekers stood up wanting to give their lives to Christ, 14 of them went through baptism classes and were baptised and six have shown growth in Christ.”

“These six have accompanied us in sharing the Jesus film and Bible storying and have been helpful in proclaiming the Gospel through song.”

From North Africa

Seven made decisions to follow Jesus in the past 18 months. Five were associated with our project.



Bruce Turner sharing the audio Bible with Robinson and Nicholas



Marlene Van Tonder



Jeremy and Felicity, Orlando, Caspian, Aitken



Rob and Tianne Varicak

Redefining Mission in the 21st Century

by Len Lesleighter,
AIM Asia-Pacific Director

Today the definition of “Christian Mission” seems broader than ever. Jay Matenga (NZ) and Malcolm Gold (USA) reported a broad range of definitions surveyed world-wide in their book “Mission in Motion” (2016).

They asked “What is mission?” Their results varied so much they gave a continuum or range. Evangelism or personal salvation is at one end and social action is at the other.

One mission representative surveyed noted the Fair-Trade Coffee stand stole the show at one missions’ event. Maybe they had really good coffee! Fair Trade coffee represents the social justice ideal of farmers receiving fair wages.

At the risk of over simplifying things, I think it is time to go back to the basics in scripture.

What does Jesus say about “mission”? What does “mission” look like in the first-century church portrayed in books like The Acts of the Apostles? How does AIM interpret this?

Jesus’ perhaps most famous statement on “mission” is the great commission in Matthew 28:18-20. Then Jesus came to them and said, “All authority in heaven and on earth has been given to

me. Therefore, go and make disciples of all nations of all nations, baptising them in the name of the Father and of the son and of the Holy Spirit, and teaching them to obey everything I have commanded you. And surely, I am with you always, to the very end of the age.” (NIV).

Teaching people to follow Jesus, and baptism are key here. Following Jesus seems to start with being born again. (John 3.)

*Who will pray?
Who will come?
Who will go?*

www.aimint.org/ap/go

The Apostle Paul, whose mission activities are well reported in Acts, defined the main thing. “For what I received I passed on to you as of first importance: that Christ died for our sins according to the Scriptures, that he was buried, that he was raised on the third day according to the Scriptures; and that he appeared to Cephas and the Twelve.” (1 Cor 15:3-5).

Salvation from our sins through the death and resurrection of Jesus Christ is the key message.

In Acts, Stephen, is one of seven chosen to serve on tables for Greek widows. Social justice? Yes. However, Stephen gave his life proclaiming the Gospel of Jesus Christ at the feet of then terrorist Saul, soon transformed to be the Apostle Paul (Acts 6-8).

Acts of love are proclaimed in the Scriptures. Jesus teaching on love your neighbour, doing good to those that persecute you, is vital. However, without the proclamation of the Gospel, I do not feel these alone qualify as “Biblical mission.”

Remember what Jesus said in Matthew 24:14, “This gospel of the kingdom shall be preached in the whole world as a testimony to all nations, and then the end will come.”

Africa Inland Mission is about telling the good news of salvation in Jesus Christ, and teaching people to follow Him. Our priority is unreached African people, who will otherwise never hear the gospel. To do this, we engage people to:

1. Make disciples among the unreached;
2. Train African church leaders;
3. Mobilise and send out Africans to make disciples.
4. Then there are those supporting and helping the people doing these three.

We have doctors, nurses, farmers, theological educators, teachers, builders, mechanics, evangelists, and pastors. All work together to show God’s love and tell people, who may otherwise never know, about Jesus.

This is what AIM calls mission. It’s God’s mission, but He uses people. Come and help us. We ask the Lord of the harvest to send out workers, as Jesus requested in Matthew 9:36-38:

“When he saw the crowds, he had compassion on them, because they were harassed and helpless, like sheep without a shepherd. Then he said to his disciples, “The harvest is plentiful but the workers are few. Ask the Lord of the harvest, therefore, to send out workers into his harvest fields.” (NIV).



SHARING THE GOSPEL AND
MAKING DISCIPLES – THE KEY
TO BIBLICAL MISSION.

Response Form

Yes, I would like to support AIM's ministry

I want to give monthly

\$50 \$25 \$100 \$

Give a one off gift of \$

Please complete the payment authority below.

Please make cheques payable to Africa Inland Mission Int. (Aust.) Inc. or complete card details below; or donate online: AfricaInlandMission.org/ap/give (PayPal fees apply to online gifts)
Please use my donation

Where Most Needed

Vision 2020 Initiatives	\$
Asia-Pacific Mobilising	\$
African Missionary Assistance	\$
Famine Relief and Crises Response	\$
My Own Option	\$
My Total Donation	\$

My Address

Mr/Mrs/Miss/Ms/Dr/Rev

Family Name

First Name

Address

Postcode

Email

Phone

Payment Authority

(Card payments processed in Australia only)

Card Type Visa Mastercard

Card Number

Expiry Date

Name on Card

Signed

Date

Periodical Payments/Internet Deposits

You can make direct payments into AIM Australia or New Zealand bank accounts.

For Details, Contact:

New Zealand: **T** 09 281 4595, or

Australia: Robbyn **T** 02 4322 4777

Response slips can be mailed to AIM in:

New Zealand: PO Box 13457 Onehunga 1643

Australia: PO Box 328 Gosford NSW 2250

Remembering AIM in your will

Leaving a bequest to AIM in your will is a way you can ensure the ongoing proclamation of the Gospel.

Your bequest will help AIM mobilise people and reach Africa's unreached. These are people who otherwise may not hear the good news of Jesus Christ.

Wills are a time to remember your family. They are also a time to share with Christian ministries close to your heart. A simple way to remember AIM is to leave a specific sum or a proportion of your estate.

A sample clauses is:

"I give, devise and bequeath the (Insert details) to Africa Inland Mission Ltd free of all duties; for which written acknowledgement of the Chief Executive Officer of Africa Inland Mission Ltd. shall be sufficient."

Gift details, can be:

- A specified proportion (%) of your estate.
- The whole of your estate. This will normally only be if you do not have children or dependants.
- A specific sum of money, or a number of shares or lot of real estate.

Other details you need to know to leave a gift in your will are:

In Australia

Africa Inland Mission Ltd.
PO Box 328, Gosford NSW 2250;

In New Zealand

Africa Inland Mission International
New Zealand
PO Box 13457, Onehunga Auckland 1643.

Contact Asia-Pacific Director

E director.au@aimint.org

Please see our brochure "Introducing Africa Inland Mission" on aimint.org/ap/connect
Africa Inland Mission is registered as charities in Australia and New Zealand, as named above.
Our policy is that bequests will be allocated for general use or unrestricted funds.

Thank you for remembering Africa Inland Mission.

