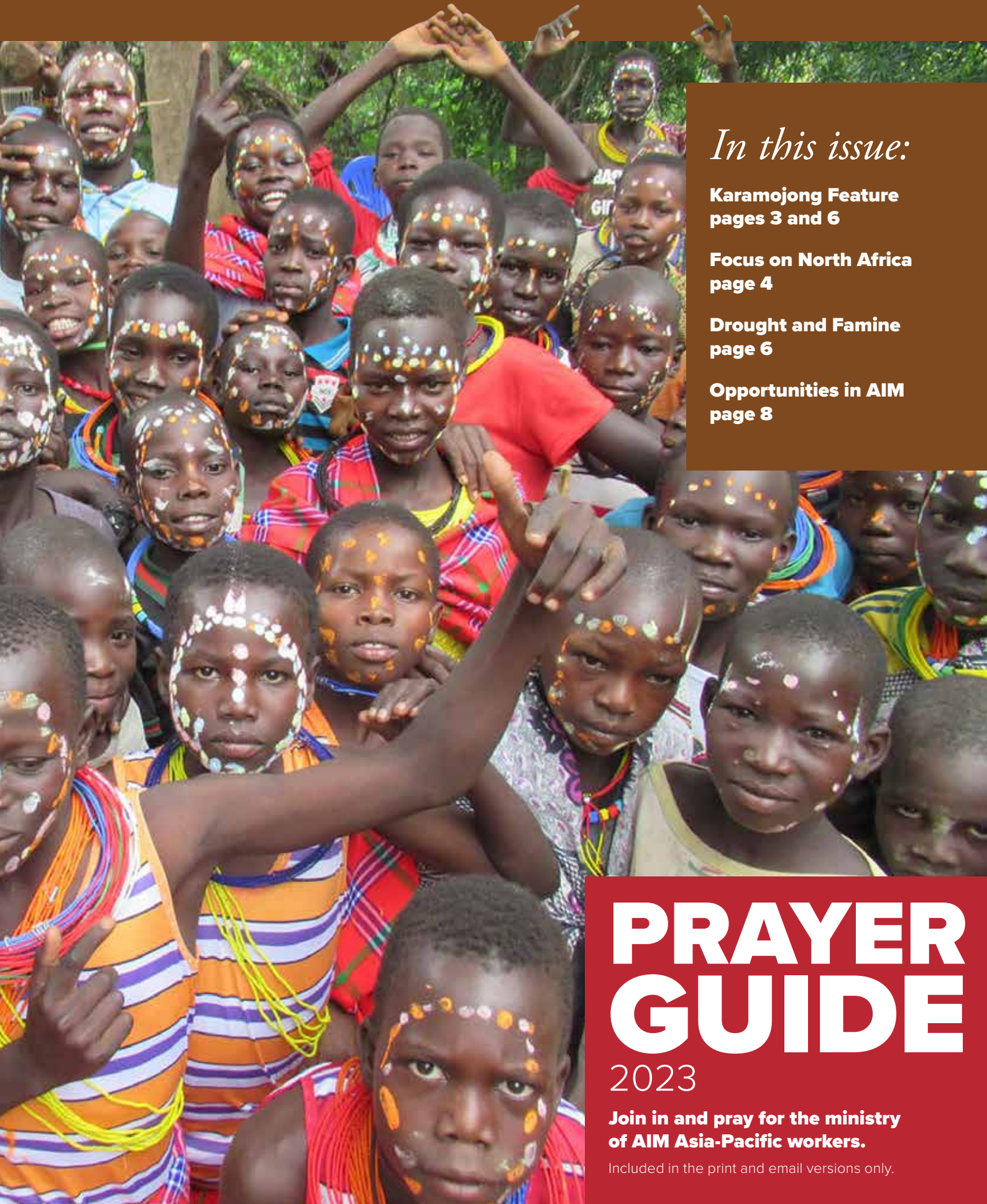




**AFRICA  
INLAND MISSION**  
Christ-Centred Churches  
Among all African Peoples

**AFRICA**  
news  
Apr-Sep 23  
[www.aimint.org/ap](http://www.aimint.org/ap)



*In this issue:*

**Karamojong Feature**  
pages 3 and 6

**Focus on North Africa**  
page 4

**Drought and Famine**  
page 6

**Opportunities in AIM**  
page 8

**PRAYER  
GUIDE**

2023

**Join in and pray for the ministry  
of AIM Asia-Pacific workers.**

Included in the print and email versions only.

# Australia's First AIM-Air Pilot

**P**hil Castelijn has become the first AIM missionary pilot from Australia, ready to serve in Kenya.

Phil and his wife Lauren became appointee members of the Africa Inland Mission in Australia and the Asia-Pacific in October 2021. They joined AIM with a passion for reaching the lost with the Gospel of Jesus Christ. They desired to serve with Africa Inland Mission's airwing, AIM-Air, serving those working among Africa's unreached peoples.

"It's great to be able to serve God with the gifts and abilities he's given each of us and for us to use this to help further the spread of the Gospel," Phil said.

Phil came to AIM as a four-year trained aviation mechanic and a licensed pilot and continued his preparation, including flight training and advanced pilot qualifications. Lauren is a physiotherapist. They came as a young couple and welcomed the birth of their first child Josiah in November 2022.

In January 2023, Phil passed a technical evaluation (TE) in the USA through the JAARs program (formerly Jungle Aviation and Radio Service, an arm of Wycliffe Bible Translators.) Phil's pass was subject to further flight training in 2023 and a three-month JAARS Pre-field Orientation in early 2024.

Phil and Lauren are members of Hunter Bible Church in Newcastle. They are also connected with other churches, including St. Peters Anglican in Tamworth.

Phil and Lauren are visiting churches and supporters in Australia before leaving Australia in August for the USA. They will undertake further preparation, including flight training and cross-cultural preparations. They will head to Kenya in July 2024 for AIM's Africa-based Orientation.



Phil will be a pilot and mechanic, and Lauren hopes to join AIM's Nairobi Outreach Team working among unreached people in Kenya's capital city.

If you want to pray for or financially support Phil and Lauren, please email [finance.au@aimint.org](mailto:finance.au@aimint.org) or complete the electronic form (QR code).



## Just Briefly news from Africa and the Asia-Pacific

### New AIM Workers

**Joe Luo, wife Nicola Yeung and baby son Lucas** left for Kenya in March, where Joe will be a plastic surgeon at Kijabe Hospital for a year.

**Ashley Windsor** returns to New Zealand in April after serving short-term at the Rift Valley Academy, Kenya.

**Steve and Heidi King** leave Tasmania in July for the Africa Based Orientation (ABO) in Kenya and then on to serve an initial two years at the Rift Valley Academy.

**Short termers** preparing to undertake missions training in the Go Program include **Wendy Chan** (Australia) and **Ka Man** (Hong Kong)

who are going to Kenya for two months, and **Jasmin Cochrane**, going to Mozambique for one month.

**Chris and Fiona Tyrrell** concluded a leave of absence and will serve as the Members / Teams Coach in South Sudan from midyear and lead an Inbound Team from next year.

**AFRICA**  
news  
Apr-Sep 23  
[www.aimint.org](http://www.aimint.org)

*English-language magazine of  
Africa Inland Mission Asia-Pacific  
Mobilising Region.*

**Editor** Len Leslighter  
**E** [director.au@aimint.org](mailto:director.au@aimint.org)

### Africa Inland Mission Ltd.

PO Box 328  
Gosford NSW 2250 Australia  
**T** 02 4322 4777

### Africa Inland Mission International, New Zealand

PO Box 13457 Onehunga  
Auckland 1643 New Zealand  
**T** 09 281 4595 **E** [admin.nz@aimint.org](mailto:admin.nz@aimint.org)



### Africa Inland Mission International (Hong Kong) Limited

PO Box 62324  
Kwun Tong Hong Kong  
**T** (852) 2770 5380  
**E** [director.hk@aimint.org](mailto:director.hk@aimint.org)



**AFRICA  
INLAND MISSION**  
Christ-Centred Churches  
Among all African Peoples

**Cover:** Reaching the Karamojong people of Uganda Story. **Pages 3 and 6.**

# Community Health Evangelism in the Karamoja

by Kristen Fry

**T**he Napak District in Karamoja, Uganda, has the highest rate of child trafficking in the region.

I have worked with these children since 2000 with Dwelling Places, a Ugandan non-government organisation (NGO).

In the past few years, I wanted to see how we could better support the families of these children once they return home.

I had experience in Community Health Evangelism and thought it would be great to teach this in the local church.

Empowering the church to meet the needs of its community felt like a good approach. I also wanted a spiritual impact in those homes and the schools the children attend. Community Health Evangelism was the perfect vector for this to happen.

In Community Health Evangelism (CHE), a simple health or development lesson is taught and then paired with a Bible lesson; giving people the gift of health and the Hope of the Gospel together can significantly impact a community.

I have been able to teach and work alongside a group of women in the Church of Uganda, and we have had a blast! Trying new things, learning about health, and enjoying each other in the Father's love has been rewarding.

*Recently, people in the community have come to us and asked if we would come to teach in their homes.*

This response is very encouraging.

We have visited several homes, trading centres, and schools where children are eager to learn something new. They are also starving for hope and joy.

The women and I teach a lesson or plant a sack garden (for dry season food) and then share the Word and how it will sustain you forever. Food might run out, but Father never runs out on you. Christ is the bread of life and the living water!

We're still working out some kinks in the program but trust that Christ will be made known through CHE in Karamoja.

As He transforms hearts, pray that He will transform lives. Pray that His hope and joy will spread like wildfire in a desperate region.



# Shifting Sands in North Africa

by some of our workers in North Africa.

After six years in one city, we've moved to a much more remote part of our country. Starting again in a new location has been challenging, but it has allowed us to live somewhere greatly unreached with the Good News.

The weather, the food, and the language are all similar but different enough to need some adjusting. The language is especially tricky; sometimes, we're not sure if people are using vocabulary that's new to us, if they have an accent that we can't decipher, or if they're using one of the local dialects we don't know!

The most noticeable difference is the people themselves. There are three distinct people groups here who seem to intermingle daily without much friction, despite being quite different from one another on the surface.

In general, people seem to keep themselves to themselves more than in our previous city and seem a little more devout in their religious practices.

So, how have we approached starting somewhere new?

*We try to be out and about in our immediate neighbourhood daily so people get used to seeing us around.*

For example, rather than doing our weekly shopping in one go at the small supermarket in the town centre (which would be quicker, cheaper and much simpler), we try to find things closer to home. This plan involves learning and trying out new vocabulary, sometimes

resulting in misunderstandings and unexpected purchases.

However, we hope we are slowly becoming part of the community and, along the way, providing entertainment for the local shopkeepers!

There are plenty of new things to experience. Today we went to a butcher to buy some camel meat. The butcher was very happy to tell us how healthy and tasty the camel was. And as a special treat, he carved off a small chunk of camel hump to enjoy right there and then — raw!

He thought it was delicious, and hopefully, we gave the impression that we did too.

We pray that as we become part of our new community and make friends, this will lead to more opportunities to share the Good News with the people of this town.

There is much need here, with only one believer we know.

There is much for us to learn about the culture and people's dreams for the future, and we pray that they will learn about the One who loves them and gave Himself for them.



# Priority for the Unreached

Editorial by Len Lesleighter, Mission Mobilising Director (CEO) AIM in the Asia-Pacific

Africa Inland Mission continues to share the Gospel of Jesus and make disciples, prioritising the unreached. Such priority means our strongest focus in 2023 and beyond is Africa's north and northwest, where most unreached people live (Figure 1).

We have recently commenced ministry in Niger, Mali, Senegal, and the Republic of Guinea (Figure 2). We need skilled and experienced workers to come and work alongside our national partners. Sharing the Gospel and making disciples in these countries is often best done while sharing professional skills like medical and sustainable development.

*Countries to the north of these named countries desperately need the Gospel.*

While Christianity in Africa has grown in 123 years from 1900 to the present (Figure 3), there are still 740 groups in Africa's north unreached with the Gospel. Christianity increased from 7.5 million (9% of the population) to 630 million (48%), but less than 1% of the 250 million people in North Africa are evangelical Christians.

Sub-Saharan Africa is now a mission force, which does not excuse churches in Australia and the Asia-Pacific from the task. Jesus directs all His people and churches to "Make disciples of all nations" (See Matthew 28:16-20).

Africa Inland Mission's prime purpose is to serve churches globally in fulfilling this great commandment from Jesus. All we need is more churches committed to this command. AIM is exploring opportunities for churches to be stronger partners in the mission endeavour. Churches can partner with AIM in several ways, including co-leading mission endeavours to the unreached. We'd love to hear from you.

The words of songwriter Keith Green who died in an aviation accident in 1982, provide a sober reminder for us all in his song "Asleep in the Light":

*"You close your eyes and pretend the job's done.  
Don't close your eyes, and don't pretend the job's done!"*

The disproportionate use of human and financial resources is alarming (Figure 4). Taking the Gospel to the unreached attracts the fewest mission resources. The 29% of the world's eight billion people that remain unreached are served only by 3% of the world's missionaries and 1% of mission finance.

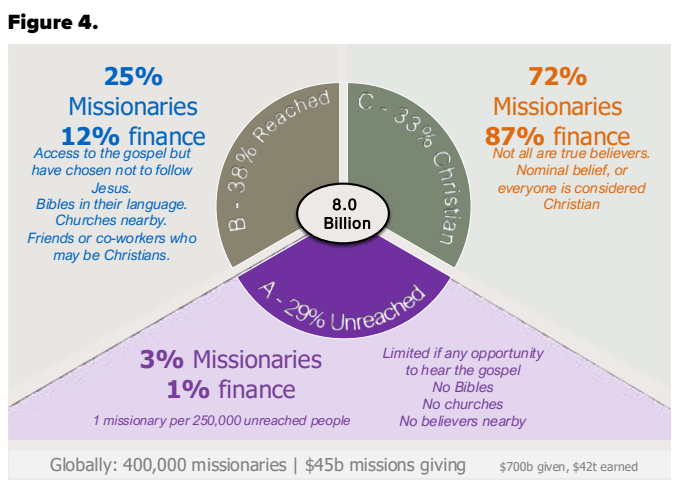
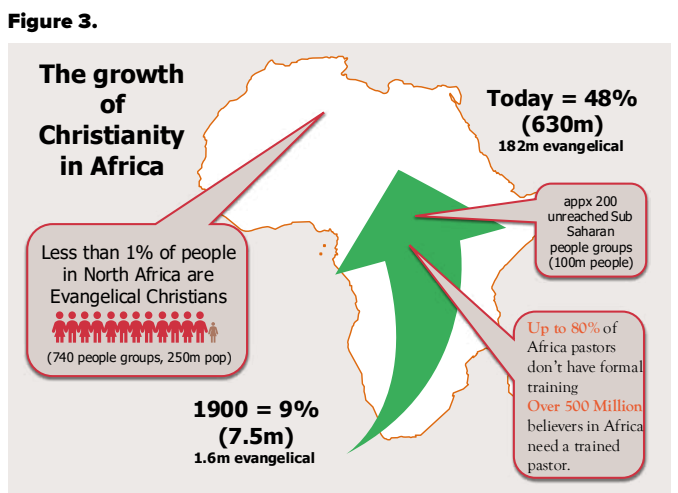
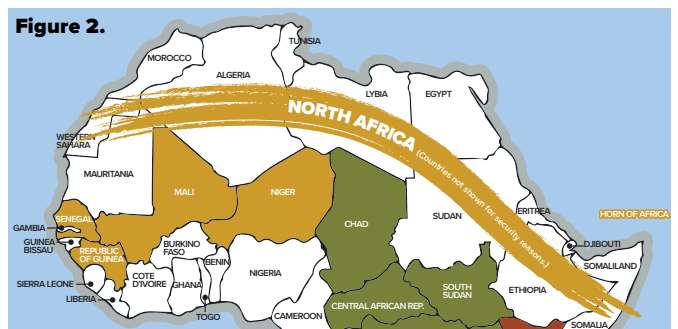
Most mission money and missionaries in the world help Christians or the reached.

Will you join AIM in this task of reaching Africa's unreached? Your partnership will help take the Gospel to the unreached. We value your prayers, financial gifts and partnership through sending and supporting workers.

Contact us. [www.aimint.org/ap](http://www.aimint.org/ap)

Support AIM in Australia (QR code)

[www.cognitofirms.com/AfricaInlandMissionLtd/](http://www.cognitofirms.com/AfricaInlandMissionLtd/)  
PartnerWithAfricaInlandMissionAustralia



# Understanding God together among the Karamojong

*Caroline Bell talks about how moving from the United Kingdom to Moroto, Uganda, has shaped how she sees God and his character. Caroline is the leader of the AIM Moroto Team which includes Australian Nita Finger.*

I grew up in a Christian family and, from my earliest days, my understanding of God was shaped by the Bible. I believed God is both a God of love who is approachable and intimately involved in our lives, and a God who is holy, who we should fear and revere.

However, it would be naive to think that my British culture has not influenced how I understand God.

As a generalisation, I think we emphasise God's love, forgiveness and acceptance and I see my own struggle to hold the truths of God's love and closeness, and his holiness and 'otherness' together.

These truths are not mutually exclusive, but it is easy to focus on one to the exclusion of the others. We value knowledge, understanding and discovery, which encourages me to search the Bible and grow in my understanding of God. However, we

often overlook or minimise the spiritual realities of life.

Therefore, I find myself underestimating God's power and provision, resulting in self-reliance.

In contrast, a traditional Karamojong worldview believes that God made people, but the reason why is unknown. This is reflected in their word for God, Akuj, which means 'beyond our understanding or explanation'. After creating people, God's involvement in life between birth and a natural death at a good age is limited. Older people may use the greeting enwaka which means 'may we hide from God so that he doesn't take our life'.

The Karamojong more inherently see the spiritual dimension of every part of life. This is expressed in their traditional rites and practices, including sacrificing at shrines to avoid offending God or the spirits. Among believers, I often see a greater dependency on God and recognition of their need for his involvement in their lives.

Living in another culture is a wonderful opportunity to have a new and different perspective brought to bear

on my cultural understandings and beliefs.

It exposes assumptions I don't even realise I make.

At times this is unsettling and uncomfortable, but it is a gift that reveals a deeper richness and depth to truths about God which I have believed for many years.

It is a privilege to join with my Karamojong brothers and sisters to celebrate our amazing God and grow in our understanding of who he is together.

Source: eu.aimint.org



**Caroline lives with the Karamojong, seeking to share the gospel, so that they may truly know Jesus for themselves, mainly through the context of friendships, bible study/discipleship groups and in partnership with the local church.**

## Karamoja Ministry Project Set for Impact

Africa Inland Missions' Karamoja Ministry Project will enhance the making of Christ-centred churches in the Karamoja region of Uganda.

The Karamoja region of Uganda includes several people groups, including the Karamojong, Ik and Tepeth.

Caroline Bell, the leader of the Karamojong Team, manages the project in conjunction with AIM's Central Region office and the Uganda Unit.

Unit leader Adam Willard said the project will provide resources provide resources in a region with few resources.

The project will help African national missionaries and local churches.

"More people will have access to the Word of God."

The project will better equip more church leaders for their tasks vital in creating Christ-centred churches.

The project will provide audio Bibles, written Bibles, Light stream hotspots, the Jesus Film, and solar projectors to show the Jesus film, as well as complementary training for national missionaries and local churches.

"We will not participate in the

local practice of paying people to come to training but will instead ask for an appropriate level of input from participants."

You can support this Project CR-UGA-131-R Karamoja Ministry through the Africa Inland Mission Asia-Pacific Offices in Australia, Hong Kong or New Zealand.

You can use the Response Form on page 7; or [www.cognitiforms.com/AfricaInlandMissionLtd/PartnerWithAfricaInlandMission](http://www.cognitiforms.com/AfricaInlandMissionLtd/PartnerWithAfricaInlandMission)



# Drought & Famine Continue

**D**rought and famine grip East and Central Africa, including Kenya, the Horn and Uganda.

*Kenya is now in the fourth successive year of inadequate rains in the northern and eastern parts of the country.*

Relief efforts have focused on needs in drought-stricken Marsabit County. AIM provided some relief to Kiserian in Baringo County, where it is dry. Still, cattle raiders have caused more problems, making it extremely difficult for people to move around and access resources.

You can support famine relief through Africa Inland Mission's IO-130 Famine Relief and Crises Response at [www.aimint.org/give](http://www.aimint.org/give) or via your local AIM office. This project is not tax-deductible in Australia or New Zealand.

You can donate tax-deductible through our partners GDG via the Africa Crises Relief J1076N in Australia by credit card at [www.gdg.org.au/GiveToJ1076N](http://www.gdg.org.au/GiveToJ1076N) or <https://africancrisesrelief-gdg-j1076n.raisley.com> or in New Zealand give via credit card to [www.gdg.org.nz/GiveToJ1076N](http://www.gdg.org.nz/GiveToJ1076N).

Thank you for caring.



## Response Form

### Yes, I would like to support AIM's ministry

I want to give monthly

\$50  \$25  \$100 \$

Give a one off gift of \$

Please complete the payment authority below. Please make cheques payable to Africa Inland Mission Ltd. or complete details below; or donate online: [www.aimint.org/ap/give](http://www.aimint.org/ap/give) (PayPal fees apply to online gifts)

Please use my donation:

**Where Most Needed** \$

**Kenya Famine Relief** \$

**AIM International Famine and Crisis Relief IO-130** \$

**My Own Option** \$

**My Total Donation** \$

**Gifts for these overseas projects are not tax-deductible in Australia or New Zealand.**

General fund gifts in NZ are tax-deductible and are used in New Zealand. If a project is oversubscribed, your gift may be allocated to a similar project, or project in the same region.

*Thank you for your support.*

### My Address

Mr/Mrs/Miss/Ms/Dr/Rev/Other

Family Name

First Name

Address

Postcode

Email

Phone

### Payment Authority

(Card payments processed in Australia only)

Card Type  / Mastercard

Card Number

Expiry Date

Name on Card

Signed

Date  /  /

### Direct Deposits/Online Banking

You can make direct payments into AIM Australia or New Zealand bank accounts.

**For Details, Contact: Ann T 02 4322 4777**

**Response slips can be mailed to AIM in:**

PO Box 328 Gosford NSW 2250

# Inbound Openings for 2024

## INQUIRE NOW!

*Africa Inland Mission's Inbound and Training in Ministry Outreach (TIMO) teams exist to equip participants for a lifetime of service among Africa's unreached. You can also participate in Inbound for just one year to gauge whether God is calling you to serve long-term.*

### **Inbound Uganda**

**Orientation and Training Team**

**Kampala, Uganda**

**January 2024 for 1-3 years**

This team will work with AIM's ministry partners in Kampala to share Jesus among an unreached diaspora group. This opportunity will use the Inbound curriculum to train team members. This includes abiding as ministry, language acquisition skills, church relationships, unity within the team, and other AIM core values. This is a team context with close mentorship and practical training for ongoing ministry in a real ministry setting.

### **TIMO Indian Ocean Island**

**Training in Ministry Outreach (TIMO)**

**'Vanilla' Island, Indian Ocean**

**February 2024 for 2 years**

The TIMO program will be used to equip a team of new members to share Jesus contextually on Vanilla Island. With the aim of reproducing, indigenous, Christ-Centred Churches throughout the Islands and beyond. Team members will be engaged in teaching English, living in community, learning local language, going through the TIMO curriculum, scripture engagement and supporting the Word translation project and participating as a team member.

### **Inbound South Sudan**

**Orientation and Training Team**

**Torit, South Sudan**

**March 2024 for 1-3 years**

The vision is for churches of every nation to partner in reaching the lost of South Sudan by living incarnational lives among the unreached and partnering with local churches to reach out. A program for new missionaries to orientate, train, and transition into missional living and culture in South Sudan. Inbound training for new members will equip participants with the tools and skills they need to live well in remote South Sudan village locations on Focus and Ministry teams.

## **But that's not all!**

**The above is just a selection of AIM's Inbound and Training in Ministry Outreach (TIMO) teams. Opportunities also exist for shorter term training teams and other placements. For all inquiries go to: [aimint.org/ap/go/ministry-interest-form/](http://aimint.org/ap/go/ministry-interest-form/) or call the office on 02 4322 4777 email: [personnel.au@aimint.org](mailto:personnel.au@aimint.org)**

